

German Settlements in Dobrudscha

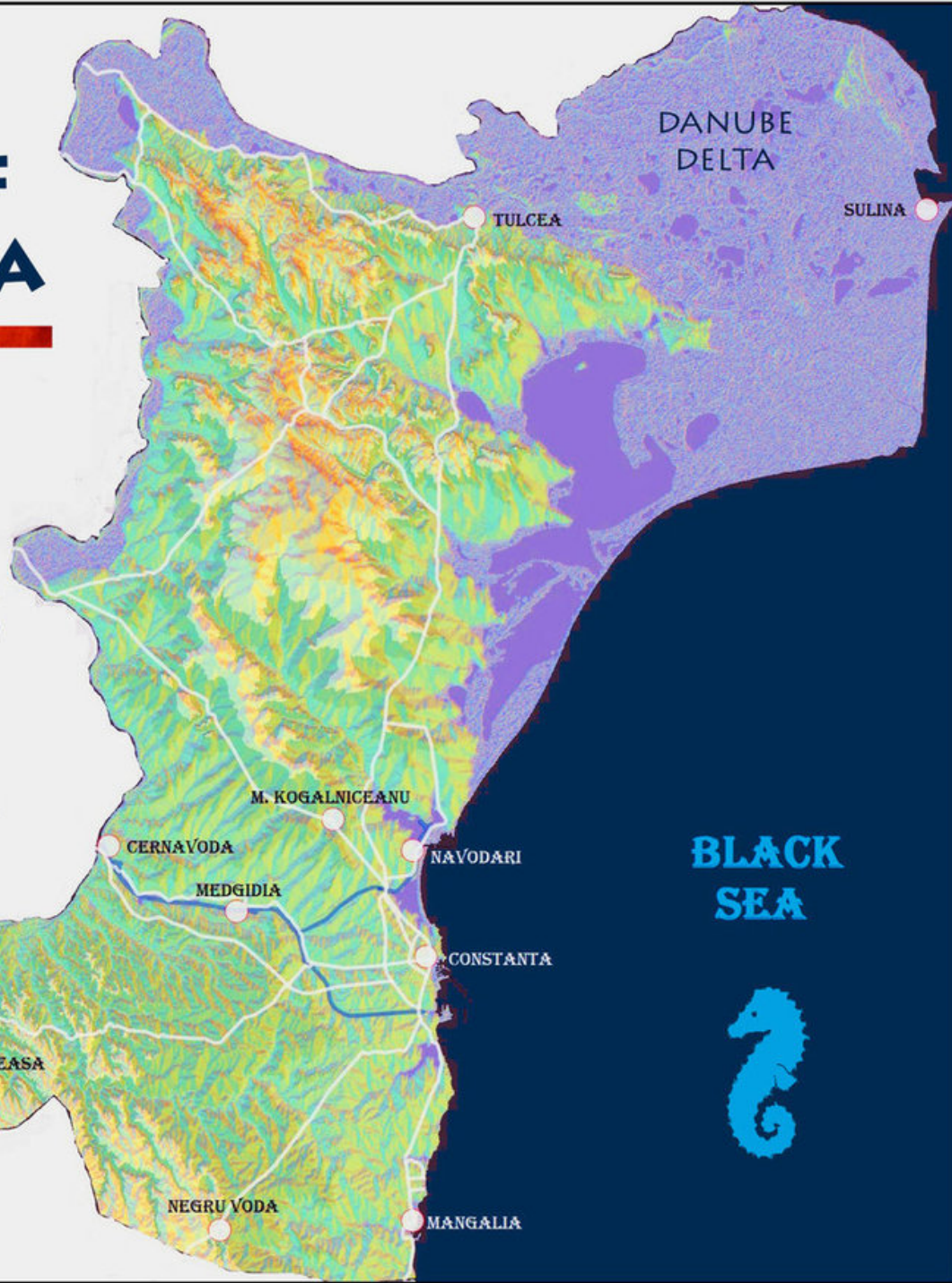
Presentation by: Allen E. Konrad
July, 2017



Romanian Provinces



MAP OF DOBRUJA



0 90 KM

Northwest Dobrudscha



Macin Mountain Range





North Central Dobrudscha

Northeast Dobrudscha

Tulcea



Danube Delta





Danube Marshland

North Central Dobrudscha Plateau



DOBROGEA, ROMANIA

Plateau Hills & Fields



Central Dobrudscha Plateau









Southern Dobrudscha

Rugged Southeast Coastline







Dobruzscha on Bulgarian Side

American Historical Society
Of Germans From Russia



Work Paper No. 8

May 1972

Dr. Adam Giesinger

**Born: 1909 near Holdfast SK
Canada**

Died: 2004 in Winnipeg, SK

Spelling & Pronunciation

Dobruđscha*

Charlotte IA

Dobruđja

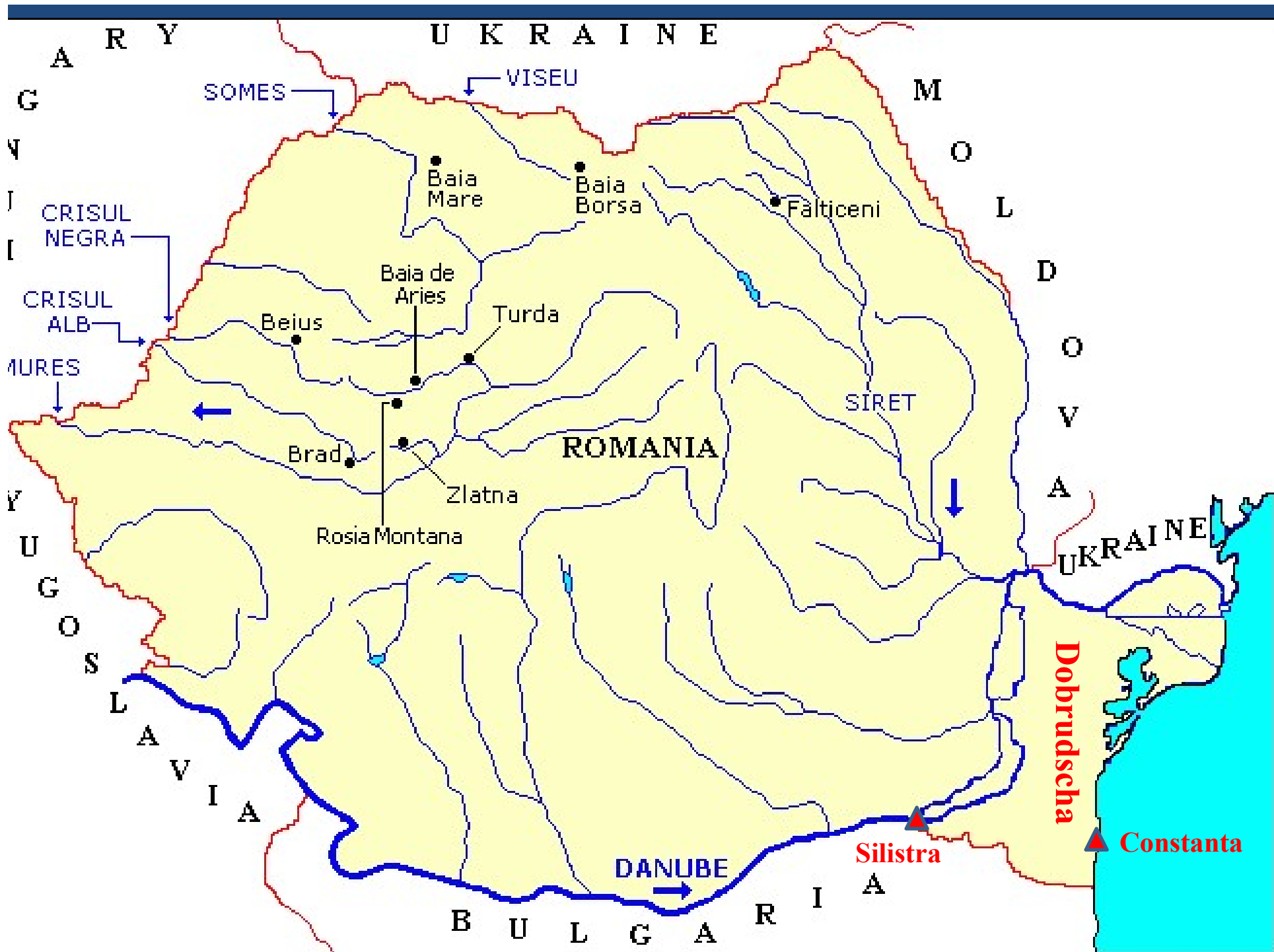
Cairo IL

Dobruja

Pierre SD

Dobrogea

Louisville KY



Russian-Turkish War 1877-1878

Turks, Tatars, Romanians,
Bulgarians, Greeks

1940 – 15,000 Germans

**THE 1835-1917
PROVINCES IN
SOUTH RUSSIA
(Now the
UKRAINE)**



Beresan

Nikolaev

Odessa

Cherson

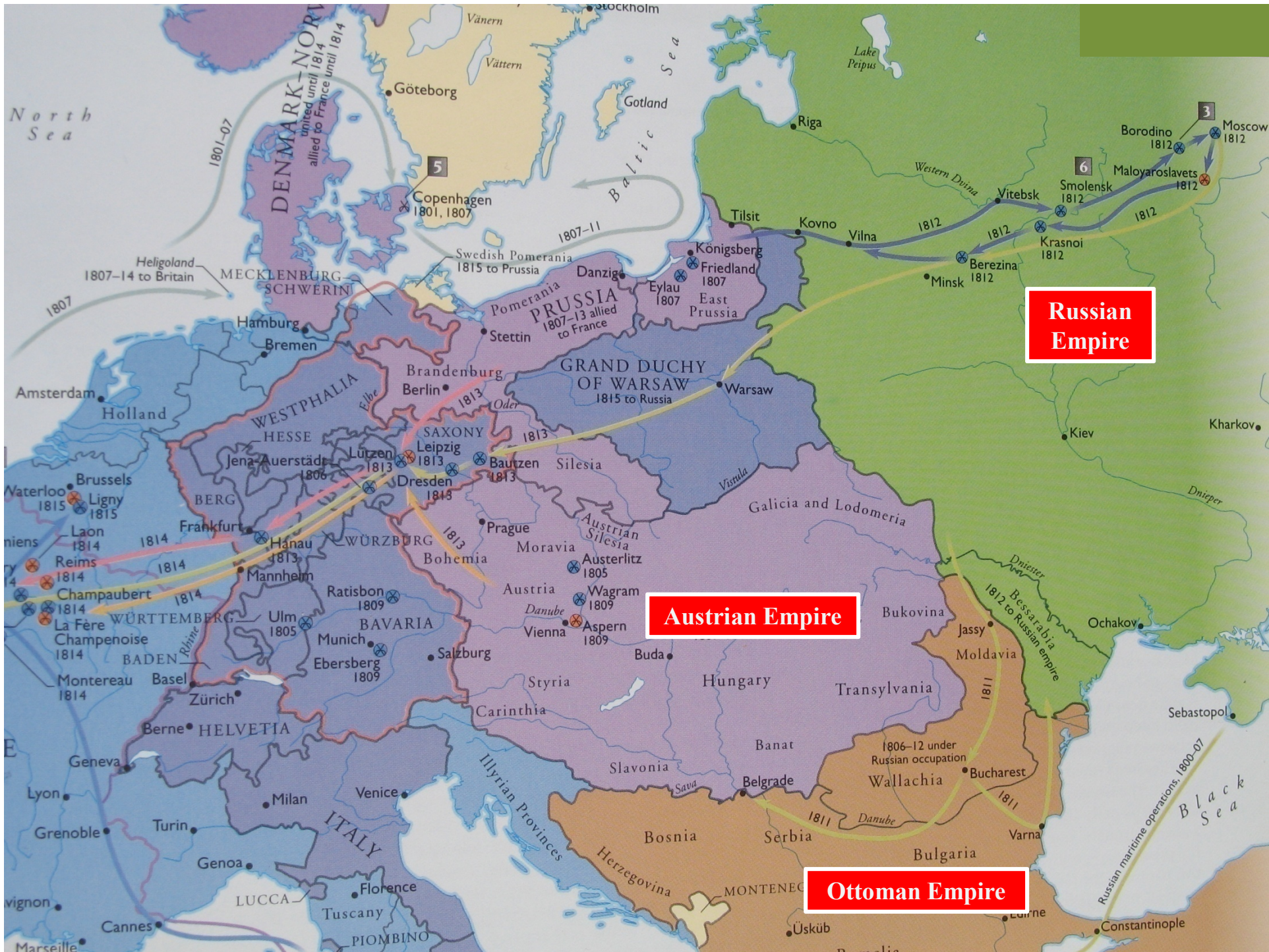
Sevastopol

SEA
OF
AZOV

BLACK SEA



1800's German-Russian Villages in South Russia (now Ukraine)
 Angefertigt Prepared by:
 Mitch Roll



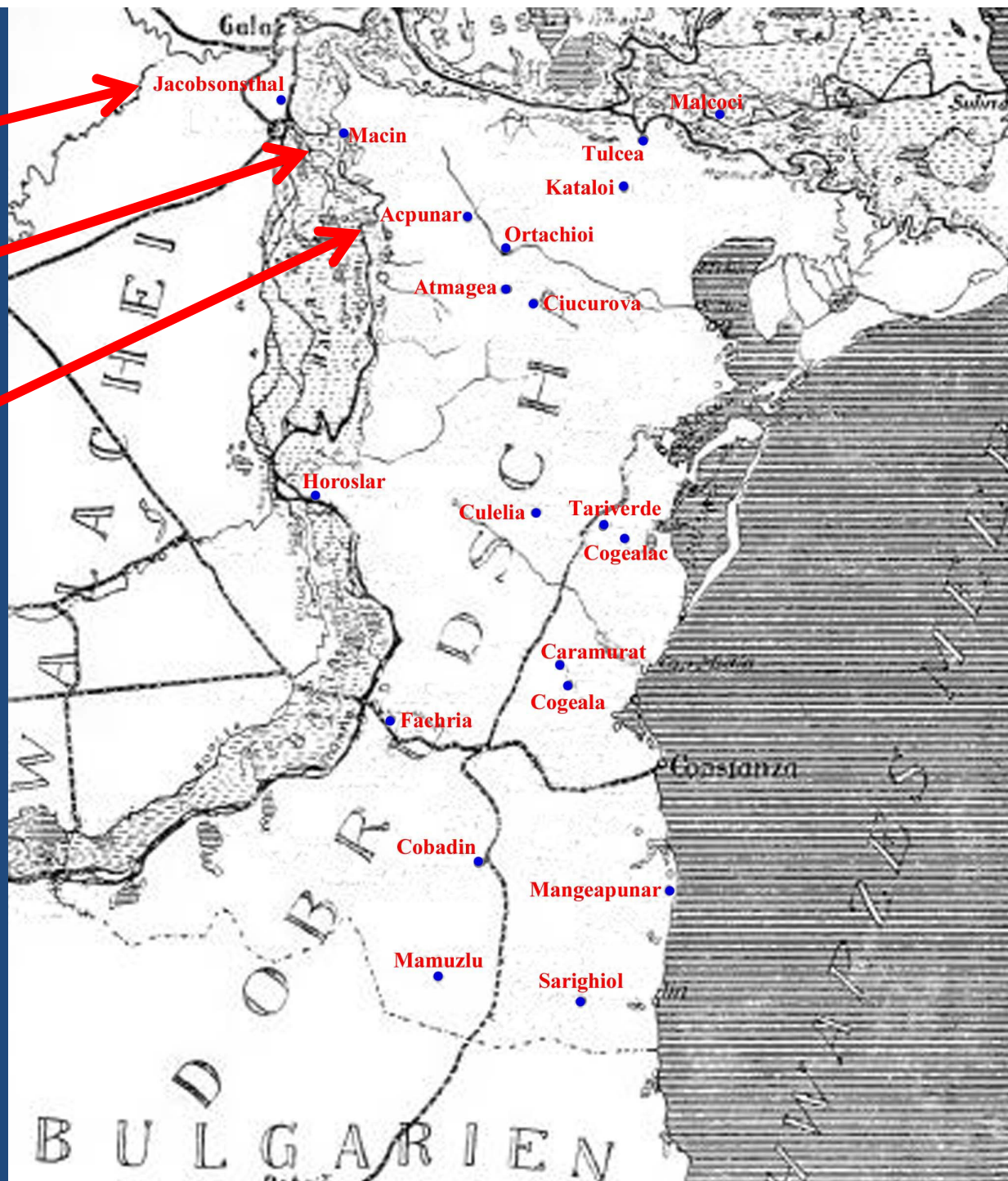
First Migration

1842 -- 1854

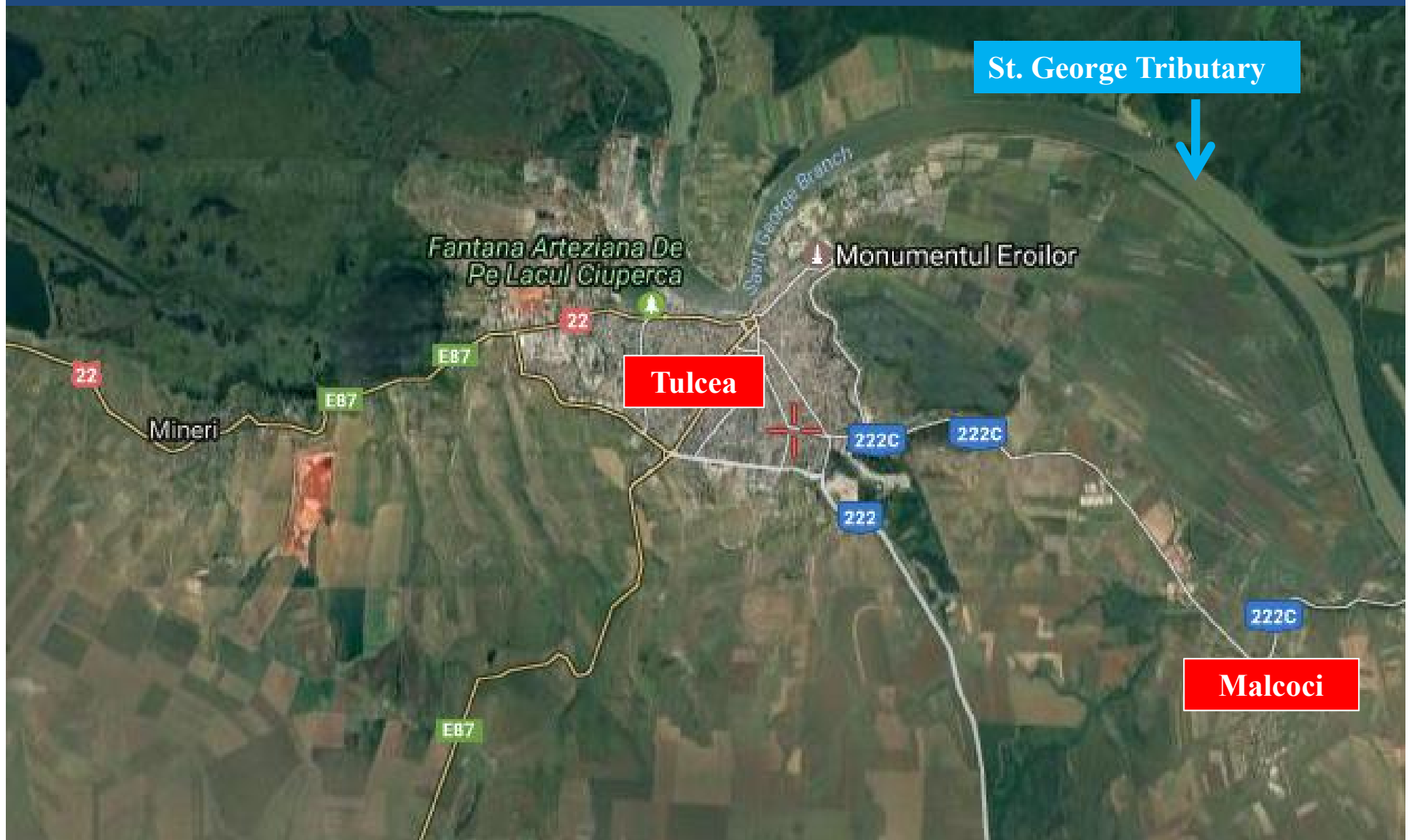
Jacobsonsthal
1844

Macin
1841

Acpunar
1842



Satellite Map of Tulcea & Malcoci

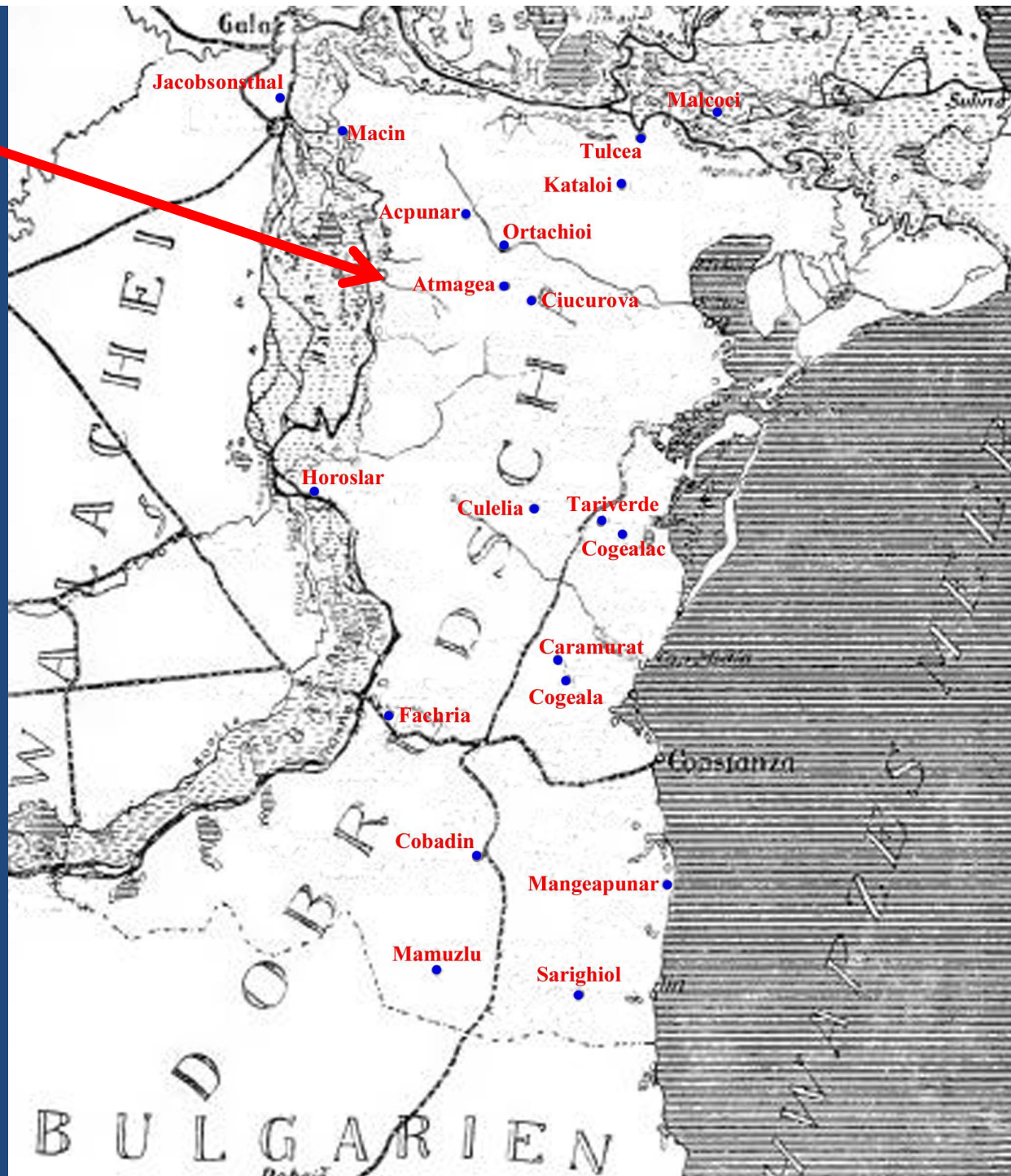




German Church in Malcoci



Atmagea 1848



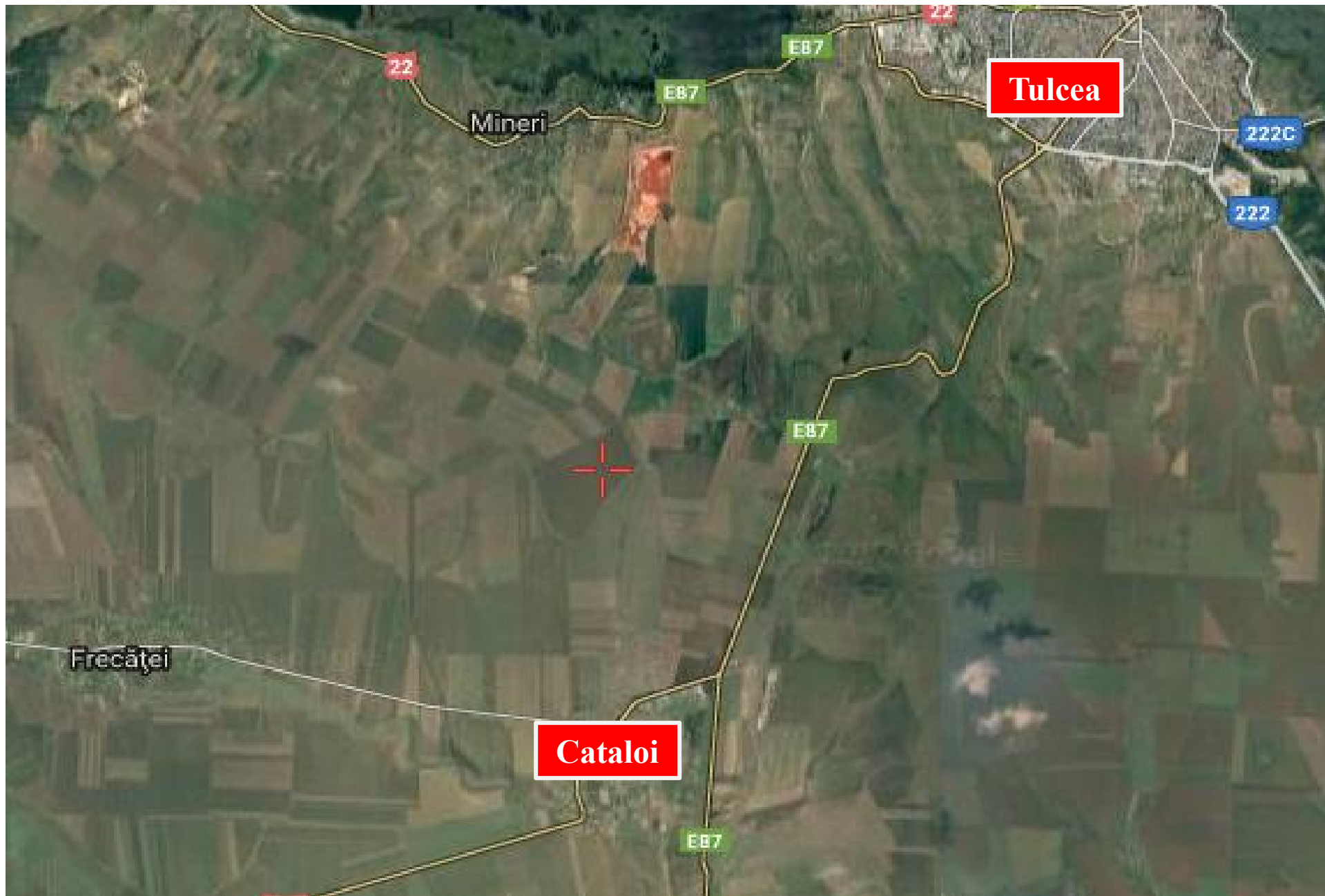
Forest Today Between Atmagea & Babadag



Crimean War 1853-1856



Britain, France & Ottoman Empire
against Russia in Crimean Peninsula



Cataloi - 1857



Ciucurova - 1857

Protestant [North Germany] Platt-deutsch Village

Lutheran Pastor from Berlin 1858

Headquartered in Atmagea
also served
Ciucurova & Cataloi

Baptists in Russia

Johann Gerhard Oncken

August Liebig

Mennonite Brethren Movement

First Baptist Parish in Russia--1869

Repressive Measures against Baptist Movement

Officially tolerated in 1879

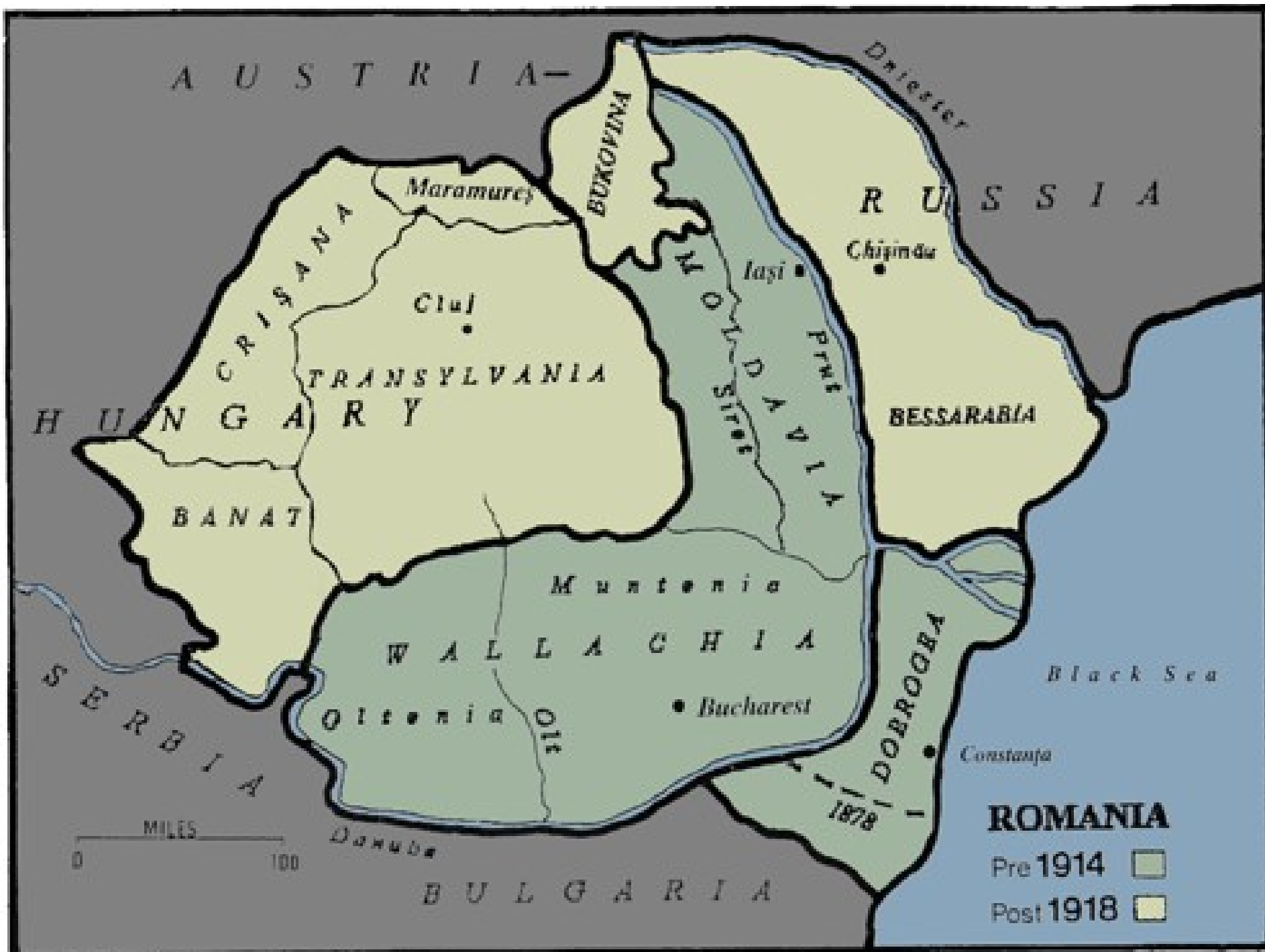
Exiled Baptist Leaders in Russia go to Cataloi

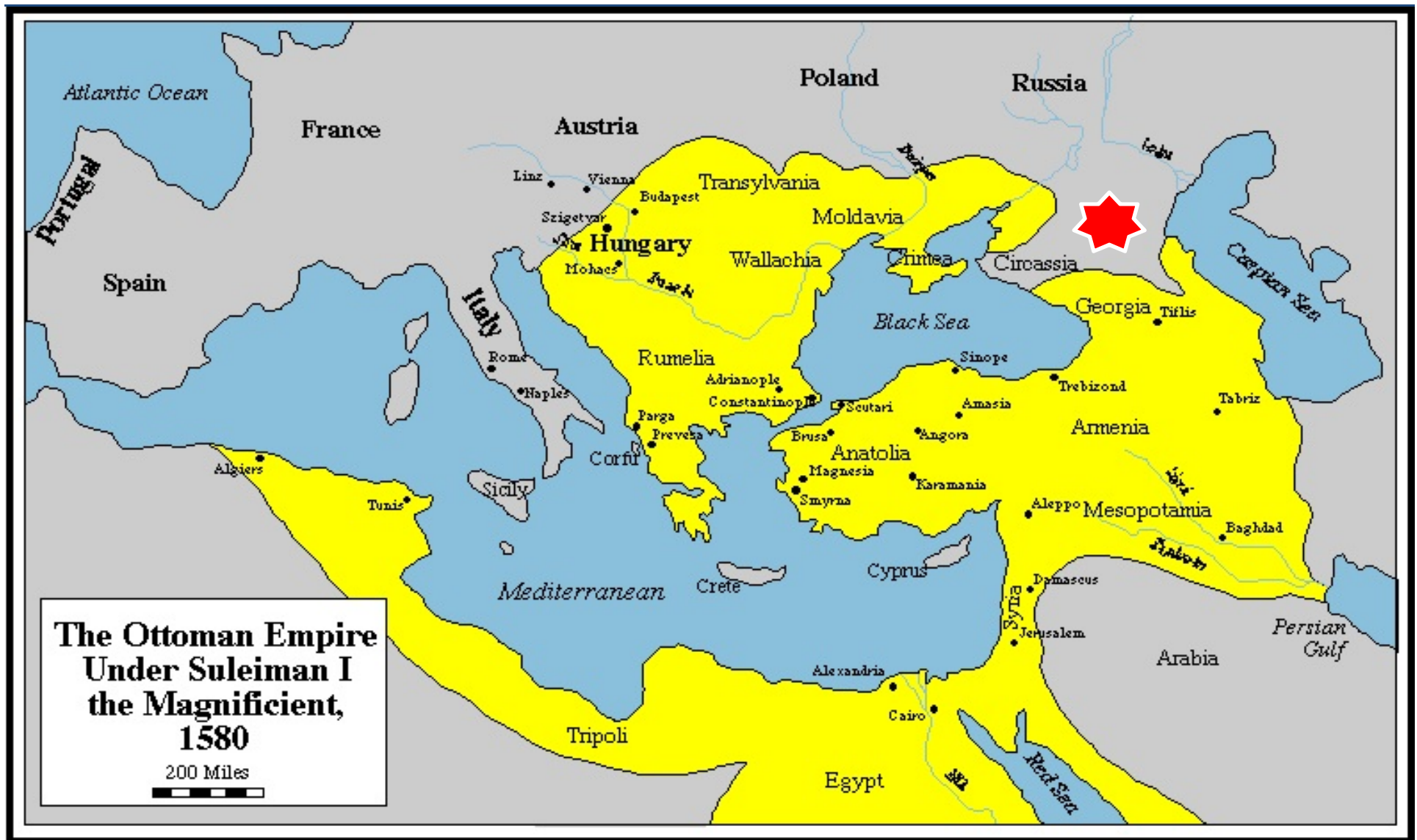
Stulberg - Heringer - Edinger – Leitner

Cataloi - 1872

German Church in Cataloi







Muslim Circassian Homeland

Second Migration

1873 -- 1883

1871

**Germans Incorporated into Russian
Local Government**

1874

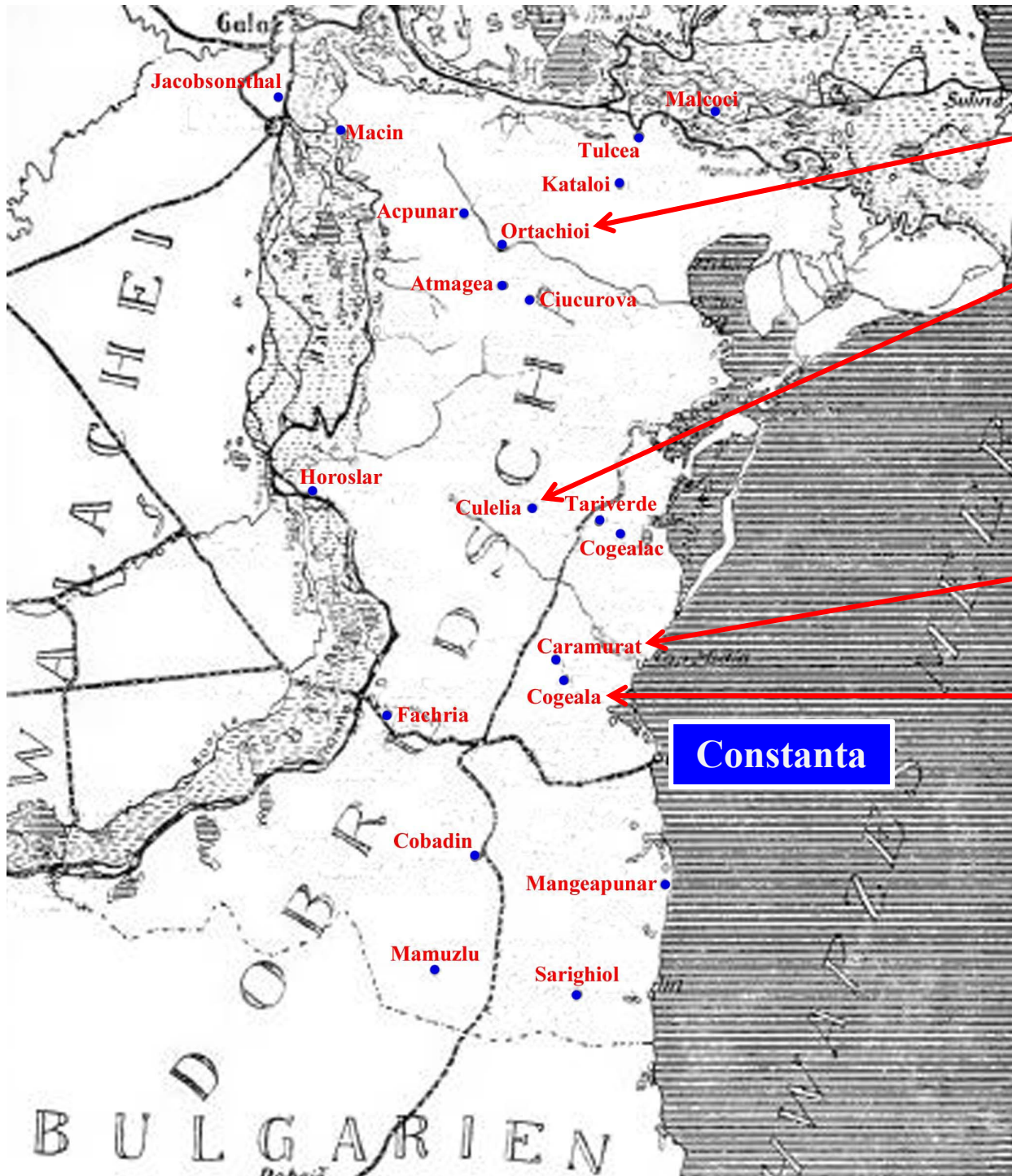
**Compulsory Military Service for
German Men**





Fachria

Constanta



Ortachioi

Culelia

Caramurat

Cogeala
Anadolchioi
Horoslar

Church in Culelia with Parsonage Burned out in the War



**Dobruudscha becomes
part of Romania after
Russo-Turkish War in
1878**

German Village *Schulz* (mayor)
replaced by Romanian *Primar*

Primar spoke no German

Land Reform 1882 & 1884

- 1. Unlimited Land Ownership Ended**
- 2. Farmer Limited to only 10 hectares (24.7 acres)**

1884

**Romanian Teachers imposed
upon German Schools**

German Teachers restricted

North Dakota



Canada



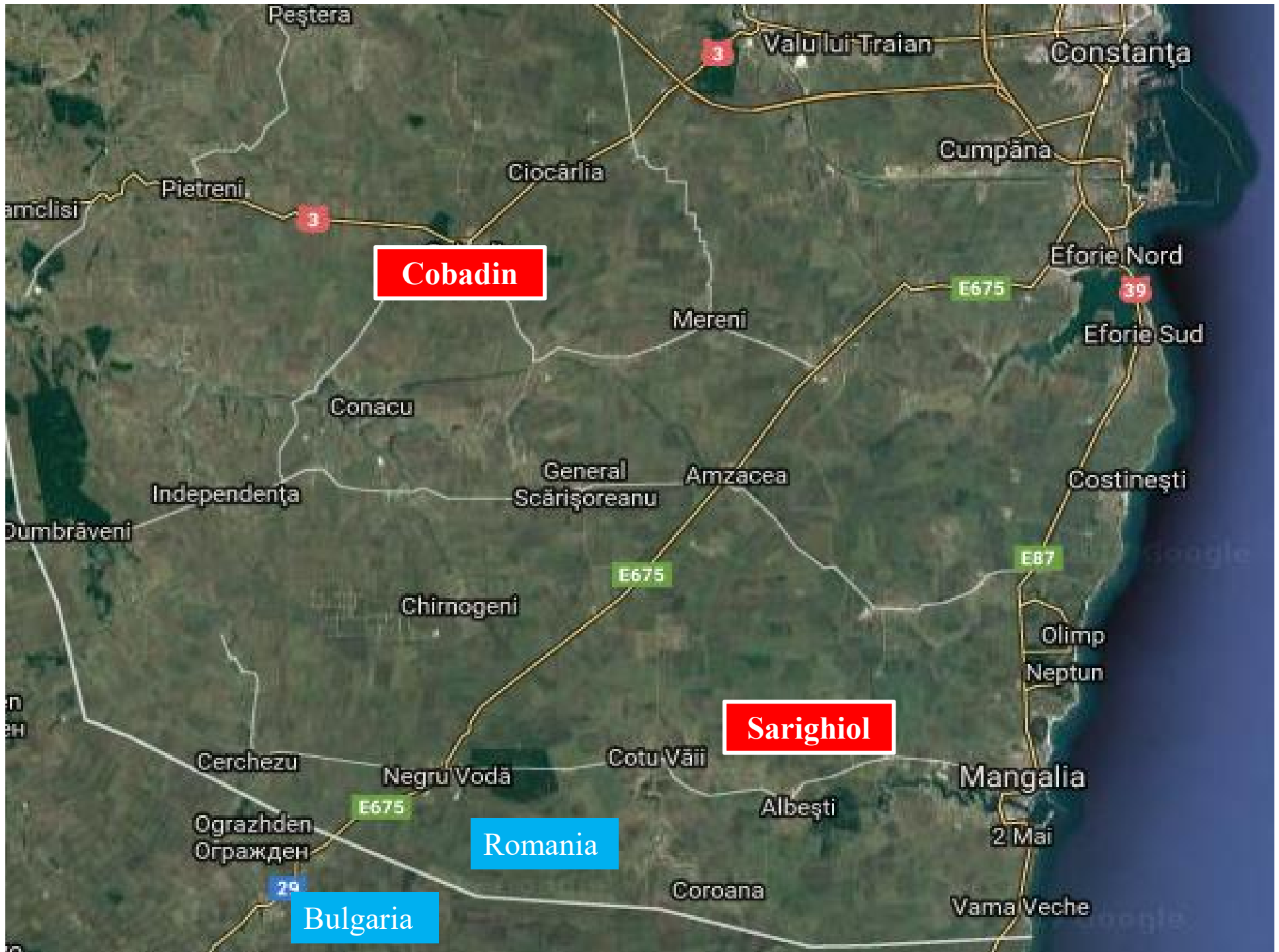
South Dakota



Argentina

Third Migration

1890 -- 1891



Cobadin

Sarighiol

Romania

Bulgaria

German Population in Dobrudscha

1878 – 3,000

1900 – 5,000

1921 – 8,534

1940 – 15,000

Daughter Colonies and Settlements in Romania 1893-1917

Alacap	Garliciu	Ostrov
Bratianu	Ghinventia	Palaz Mare
Cernavoda	Harsova	Rasova
Chiragi	Klein-Mangeapunar	Sofular
Ciobanu	Mamaia	Techirghiol
Docuzaci	Mamuzlu	
Doumai	Mangeapunar	(Maybe Others)

German Settlements in Bulgaria Dobrudscha

Ali Kalfa

Ciobankujus

Karali

Arboceko

Dobritsch

Kasimkioi

Baladja

Durbali

Koroceko

Balcik

Emirler

Musubej

Biela Slatina

Endze

Plevna

Brdarski-Geran

Hasirlik

Serdimen

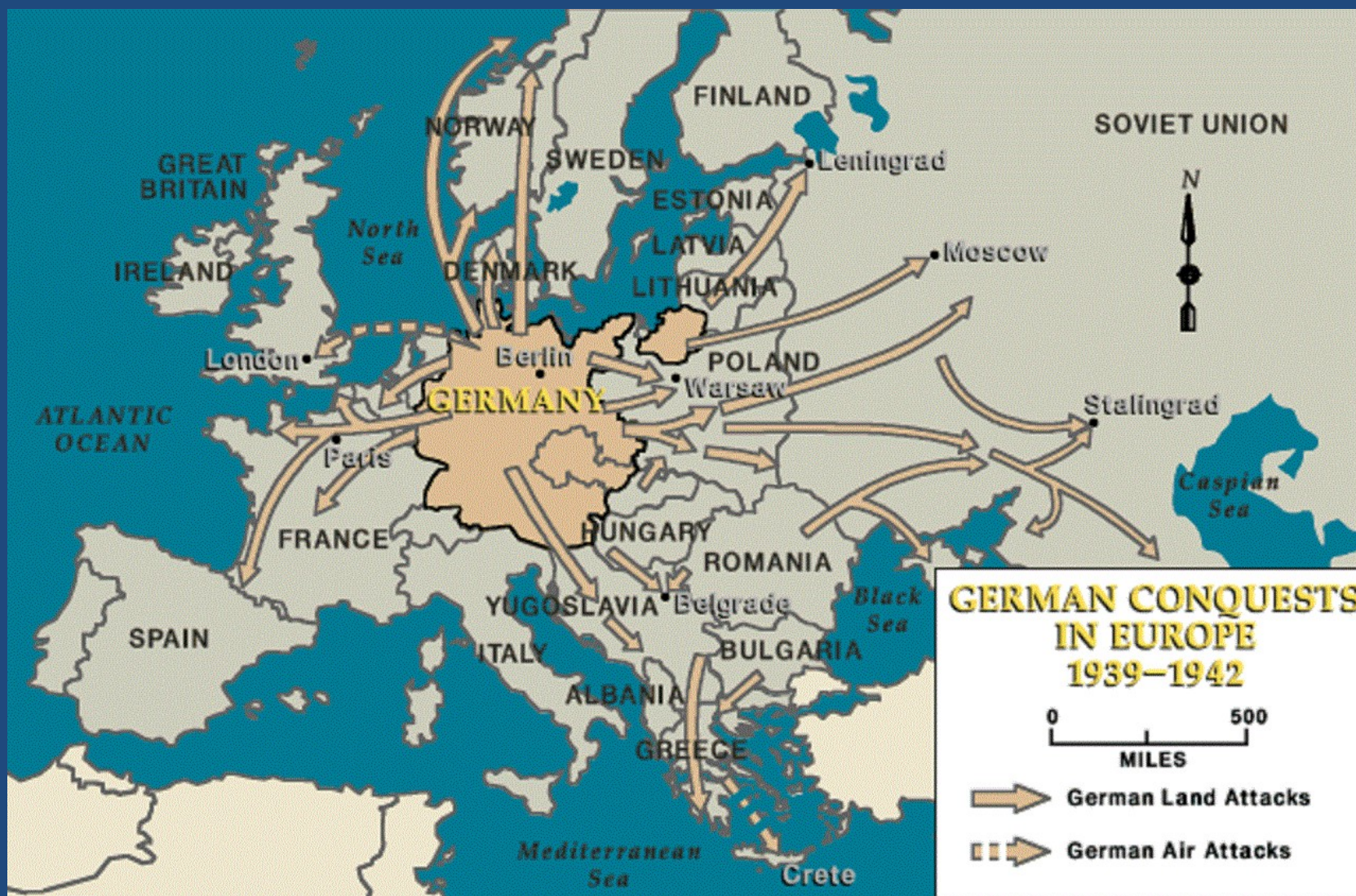
Celindje

Jamboli

Cepangchioi

Kalfakioi

Resettlement in 1940



VOMI [*Volksdeutsche Mittelstelle* =
Ethnic German Resource
Department]

DAI [**D**eutsches **A**usland-**I**nstitut] =
German Foreign County Institute

Embarkation Harbor



Iron Gate -- Danube River



Steam Ship	Trips	Route	Passengers
Budapest	02	Cernavoda-Belgrade	929
Franz Schubert	02	Cernavoda-Belgrade	886
Grein	01	Cernavoda-Belgrade	330
Hebe	01	Cernavoda-Belgrade	284
Helios	02	Cernavoda-Belgrade	1,402
Johann Strauss	01	Braila-Belgrade	330
Linz	01	Cernavoda-Belgrade	356
Melk	01	Cernavoda-Belgrade	335
Minerva	01	Cernavoda-Belgrade	408
Schönbrunn	02	Cernavoda-Belgrade	825
Stadt Passau	03	Cernavoda-Belgrade	2,297
Stadt Wien	03	Cernavoda-Belgrade	2,376
Szt. Imre	01	Cernavoda-Belgrade	483
Szt. Istvan	01	Cernavoda-Belgrade	402
Tulin	02	Cernavoda-Belgrade	880
Uranus	02	Cernavoda-Belgrade	1,329
			=====
TOTAL Passengers			13,852

German Colonist Wedding



Internet Web-sites of Interest

GPS Village Locator

<https://germans-from-russia-settlements.blogspot.com/p/maps.html>

Konrad Translations

<http://www.blackseagr.org/research.html>

Chronicle of the Village of Caratai, Dobrudscha

Church Communities in Dobrudscha in 1936

German Settlements in Dobrudscha (Part 1-8, plus 16)

History of Sofular, Dobrudscha

History of Tariverde, Dobrudscha

History of Tschukurowa (Ciucorova) Community, Dobrudscha